



la fée maraboutée

PARIS

Capsule n°1

Italie

Collection automne hiver 2020



SOMMAIRE

Cappoti

-page 5

Gonne

-page 9

Pantaloni

-page 13

Abiti

-page 16

Giacche

-page 20

Maglieria

-page 23

Bluse

-page 27



Cappotti
(Mantoux)

FC5687



T 34 à 46



795 COLORIS UNIQUE

70% COTON
25% POLYESTER
5% AUTRES FIBRES

FC5040



T1, T2, T3



704 BEIGE

100% POLYESTER
-
DOUBLURE :
100% POLYESTER

FC5098



T 34 à 46



874 PRAIRIE

85% POLYESTER
15% VISCOSE
-
100% POLYESTER

FC5131



T 34 à 46



641 ORANGE FLUO

100% POLYESTER
-
DOUBLURE :
60% ACÉTATE 40% VISCOSE

FC5334



T 34 à 46



700 NOIR

95% VISCOSE
5% ÉLASTHANNE

FC5275



T1 et T2



704 BEIGE



543 FORÊT

100% POLYESTER
-
100% POLYESTER

FC5692



T 34 à 46



795 COLORIS UNIQUE

100% POLYESTER

-
100% POLYESTER

The painting depicts a vast, hilly landscape in winter. The foreground and middle ground are dominated by rolling hills covered in a thick layer of snow. The snow is rendered with various shades of white, light blue, and pale yellow, suggesting different lighting and textures. Scattered across the hills are various trees, including dark evergreens and bare deciduous trees with brown and orange foliage. The background shows more distant, hazy hills under a pale, overcast sky. The overall style is impressionistic, with visible brushstrokes and a rich, textured surface.

Gonne
Lapesol

FC5691



T XS à XL



795 COLORIS UNIQUE

50% LUREX
50% POLYAMIDE

FC5676



T 34 à 46



795 COLORIS UNIQUE

50% POLYESTER
50% POLYURETHANE

FC5657



T 34 à 46



795 COLORIS UNIQUE

63% POLYESTER
34% VISCOSE
3% ELASTHANE

FC5648



T 34 à 46



795 COLORIS UNIQUE

100% VISCOSE

FC5643



T 34 à 46



795 COLORIS UNIQUE

64% POLYESTER
33% VISCOSE
3% ELASTHANE

FC5650



T 34 à 46



795 COLORIS UNIQUE

95% POLYESTER
5% ELASTHANE

FC5265



T 34 à 46



715 ORANGE 700 NOIR



805 PÉTROLE

100% POLYESTER

FC5139



T 34 à 46



101 BEURRE

93% POLYESTER
7% ÉLASTHANNE

-
DOUBLURE :
100% POLYESTER

A painting of a snowy mountain landscape. The scene is dominated by white snow covering the ground and slopes. In the foreground, there are several dark, leafless trees and some evergreens. A path or stream winds through the snow. The background shows rolling hills and mountains under a pale sky. The overall style is impressionistic with visible brushstrokes.

Pantaloni
(Pantalons)

FC5245



T 34 à 46



706 GRIS

60% COTON 15% LAINES
10% ACRYLIQUE
10% POLYESTER
5% AUTRES FIBRES

FC5655



T 34 à 46



795 COLORIS UNIQUE

85% POLYESTER
10% POLYAMIDE
5% ELASTHANNE

FC5697



T 34 à 46



795 COLORIS UNIQUE

89% POLYESTER
11% ELASTHANNE

FC5677



T 34 à 46



795 COLORIS UNIQUE

85% POLYESTER
12% POLYAMIDE
3% ELASTHANNE

The painting depicts a vast, hilly landscape in winter. The foreground and middle ground are dominated by rolling hills covered in a thick layer of snow, rendered with soft, textured brushstrokes. The snow is not a uniform white but has subtle variations in tone, suggesting shadows and highlights. Scattered across the hills are various trees, including dark evergreens and bare deciduous trees with brown and reddish foliage. The background shows more distant, hazy hills under a pale, overcast sky. The overall mood is quiet and serene, with a focus on the play of light and shadow on the snow.

Abiti
(Lobes)

FC5634

T 34 à 46



795 COLORIS UNIQUE

100% VISCOSE

FC5637

T 34 à 46



795 COLORIS UNIQUE

100% POLYESTER

DOUBLURE :
94% VISCOSE
6% ELASTHANNE

FC5663

T 34 à 46

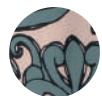


795 COLORIS UNIQUE

100% POLYESTER

FC5653

T 34 à 46



795 COLORIS UNIQUE

100% VISCOSE

FC5681

T 34 à 46



795 COLORIS UNIQUE

100% VISCOSE

FC5680

T 34 à 46



795 COLORIS UNIQUE

100% VISCOSE

FC5706



T XS à XL



795 COLORIS UNIQUE

77% POLYESTER
18% POLYAMIDE
5% ELASTHANNE

-
DOUBLURE :
100% VISCOSE

FC5707



T 34 à 46



795 COLORIS UNIQUE

97% POLYESTER
3% ELASTHANNE



Giacche
(Vestes)

FC5349



T 34 à 46



540 PAIN D'ÉPICE



608 MARINE

95% COTON
5% ÉLASTHANNE

DOUBLURE :
100% VISCOSE

FC5092



T1, T2



036 GAZON



731 HAVANE

85% POLYESTER
12% POLYAMIDE
3% ÉLASTHANNE

DOUBLURE :
100% POLYESTER

FC5690



T XS à XL



795 COLORIS UNIQUE

65% VISCOSE
32% POLYAMIDE
3% ELASTHANNE

FC5678



T 34 à 46



795 COLORIS UNIQUE

85% POLYESTER
12% POLYAMIDE
3% ELASTHANNE

The painting depicts a winter landscape with a focus on texture and color. The foreground and middle ground are dominated by snow-covered hills and slopes, rendered with thick, visible brushstrokes in shades of white, light blue, and pale yellow. Scattered throughout the scene are various trees, including dark evergreens and bare deciduous trees with brown and reddish foliage. The background shows rolling hills under a pale, hazy sky, with some areas appearing more distant and less detailed. The overall composition is layered, creating a sense of depth and atmosphere.

Maglieria
(Maille)

FC5670

T XS à XL



795 COLORIS UNIQUE

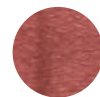
70% ACRYLIQUE
14% POLYESTER
9% LAINE
6% VISCOSE
1% FIBRES METALLIQUES

FC5210

T1, T2



705 ROSE

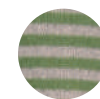


234 ROUILLE

71% ACRYLIQUE
24% LAINE
5% POLYESTER

FC5095

T XS à XL

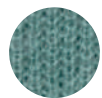


1195 GRIS/VERT

40% ACRYLIQUE
30% POLYAMIDE
30% MOHAIR

FC5704

T XS à XL



795 COLORIS UNIQUE

38% ACRYLIQUE
32% POLYAMIDE
30% MOHAIR

FC5694

T XS à XL



795 COLORIS UNIQUE

57% ACRYLIQUE
29% POLYAMIDE
7% VISCOSE
7% LAINE

FC5659

T XS à XL



795 COLORIS UNIQUE

70% ACRYLIQUE
30% LAINE
-
57% ACRYLIQUE
29% POLYAMIDE
7% VISCOSE
7% LAINE

FC5701



T XS à XL



795 COLORIS UNIQUE

47% ACRYLIQUE
29% MOHAIR
24% POLYAMIDE

FC5658



T XS à XL



795 COLORIS UNIQUE

70% ACRYLIQUE
30% LAINE

FC5699



T XS à XL



795 COLORIS UNIQUE

52% VISCOSE
28% POLYESTER
20% POLYAMIDE

The painting depicts a vast, hilly landscape in winter. The foreground and middle ground are dominated by rolling hills covered in a thick layer of snow. The snow is rendered with various shades of white, light blue, and pale yellow, suggesting different lighting and textures. Scattered across the hills are various trees, including dark evergreens and bare deciduous trees with brown and reddish branches. The background shows more distant, hazy hills under a pale, overcast sky. The overall style is impressionistic, with visible brushstrokes and a rich, textured surface.

Bluse
(Blouses)

FC5705

T XS à XL

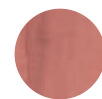


795 COLORIS UNIQUE

66% MODAL
19% POLYAMIDE
10% CACHEMIRE
5% ELASTHANNE

FC5647

T 34 à 46



795 COLORIS UNIQUE

100% VISCOSE

FC5672

T 34 à 46



795 COLORIS UNIQUE

100% POLYESTER

FC5635

T 34 à 46



795 COLORIS UNIQUE

100% VISCOSE

FC5654

T 34 à 46



795 COLORIS UNIQUE

100% VISCOSE

FC5164

T 34 à 46



715 ORANGE

64% VISCOSE
29% LAINE 5% ACRYLIQUE
2% POLYESTER

